

House - Semi-Detached

FOR SALE



NETHERHALL ROAD HUMBERSTONE LEICESTER LE5 1DL

£230,000

FEATURES

- No chain
- Great location
- Off road parking for multiple cars + garage
- Two Bedrooms
- Kitchen
- Freehold
- Potential to extend (stpp)
- Semi - Detached House
- Lounge
- Wide garden



 **SETHS**

2 Bedroom House - Semi-Detached located in Leicester

GROUND FLOOR

ENTRANCE HALLWAY

Laminate flooring, radiator, under stairs storage cupboard, staircase leading to first floor

LOUNGE

18'10" x 10'8"

Laminate flooring, radiator, uPVC double glazed window, uPVC double glazed sliding patio door

KITCHEN

11'3" x 7'3"

Wall and base units with worktops over, 4 ring electric hob with oven / grill and extractor hood, sink with mixer tap and drainer, plumbing for washing machine, space for fridge / freezer, laminate flooring, partly tiled walls, uPVC double glazed window

LOBBY

UTILITY ROOM

With plumbing for washing machine and space for dryer

GARAGE

With electric up and over door

FIRST FLOOR

BEDROOM 1

13'11" x 8'11"

Carpeted, radiator, storage cupboard, uPVC double glazed window

BEDROOM 2

10'7" x 9'8"

Carpeted, radiator, uPVC double glazed window

SHOWER ROOM

WC, wash hand basin with mixer tap, shower cubicle, towel radiator, lino flooring, tiled flooring, towel radiator, uPVC double glazed window

OUTSIDE

To the front of the property is a driveway with space for multiple cars along with access to the garage. To the rear of the property is a spacious garden partly laid to lawn / partly slabbed with wooden fence surround.

COUNCIL TAX BAND - A




BELGRAVE OFFICE SALES | 20 LOUGHBOROUGH ROAD, LEICESTER, LE4 5LD

Call us on
0116 266 9977

info@seths.co.uk
www.seths.co.uk

Council Tax Band

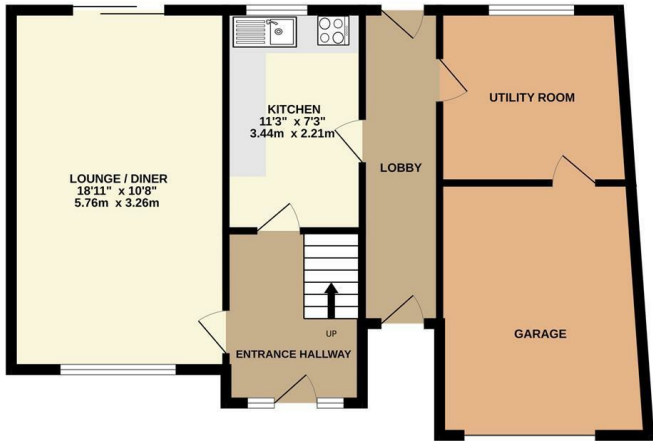
A

Energy Efficiency Rating		
	Current	Potential
<i>Very energy efficient - lower running costs</i>		
(92 plus) A		
(81-91) B		
(69-80) C		
(55-68) D		
(39-54) E		
(21-38) F		
(1-20) G		
<i>Not energy efficient - higher running costs</i>		
England & Wales	EU Directive 2002/91/EC	

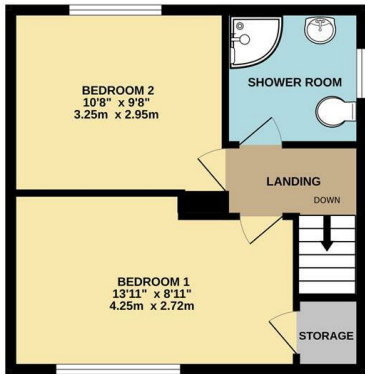
Agents Note: Whilst every care has been taken to prepare these particulars, they are for guidance purposes only. All measurements are approximate and are for general guidance purposes only and whilst every care has been taken to ensure their accuracy, they should not be relied upon and potential buyers are advised to recheck the measurements.



GROUND FLOOR



1ST FLOOR



Whilst every attempt has been made to ensure the accuracy of the floorplan contained here, measurements of doors, windows, rooms and any other items are approximate and no responsibility is taken for any error, omission or mis-statement. This plan is for illustrative purposes only and should be used as such by any prospective purchaser. The services, systems and appliances shown have not been tested and no guarantee as to their operability or efficiency can be given.
 Made with Metropix ©2023